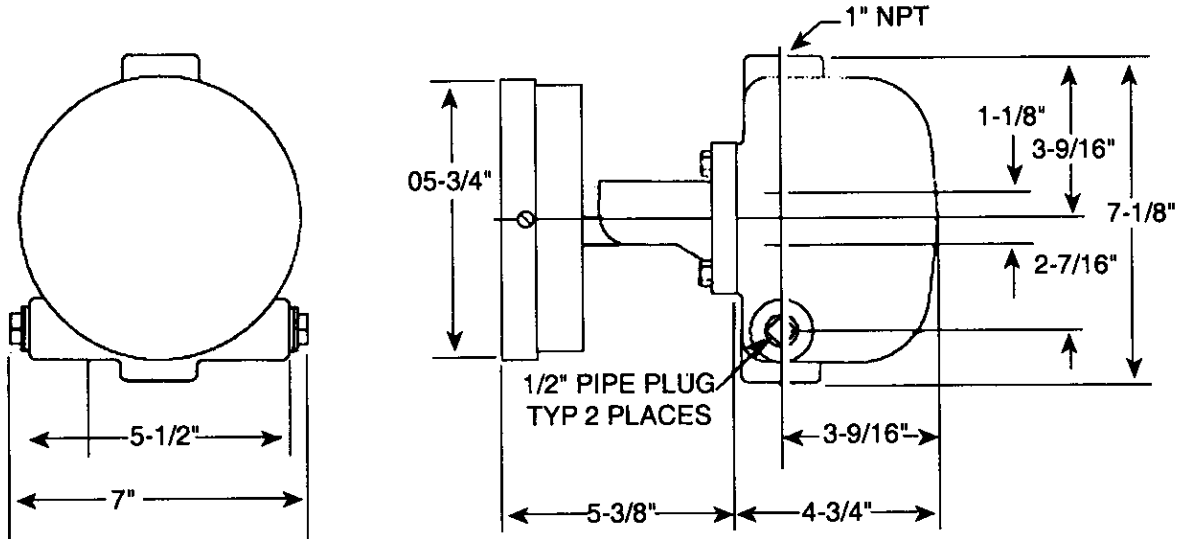


SPECIFICATION PRINT

Cast Iron Water Level Control



SPECIFICATIONS:

- UL and CSA rated
- Float: 304 Stainless Steel
- Body: Cast Iron
- SPDT snap action switch
- Rated 16 amp 120/240/480 VAC
- Level switch contains no mercury
- 365°F temperature rating
- 150 psig pressure limit
- 1" NPTF connection
- General purpose NEMA-1
- Model No. 123-7000-153



Penn Separator Corp.

P.O. Box 340, Brookville, PA 15825

Cast Iron Water Level Control

ARS 09/05/07

A 26174-1